



SUPERELASTIC NITINOL

STAPES-PROSTHESES

- **NEW GENERATION** of self crimping Nitinol Pistons
- Platinum/PTFE-Prostheses
- Titanium-Prostheses





The piston's hook is usually made of titanium, platinum, PTFE or thermo-reactive nitinol. These types of pistons need an additional closing step to fix the hook around the incus. This is either done by crimping or heating, dependent on the material.

The new generation pistons have a hook manufactured from *Superelastic Nitinol* which makes the procedure simpler and quicker an account that the pistons

- are self crimping
- do not need an additional closing step
- do not need applied heat

The *Superelastic Nitinol* piston delivers excellent results and is safe for the patient due to

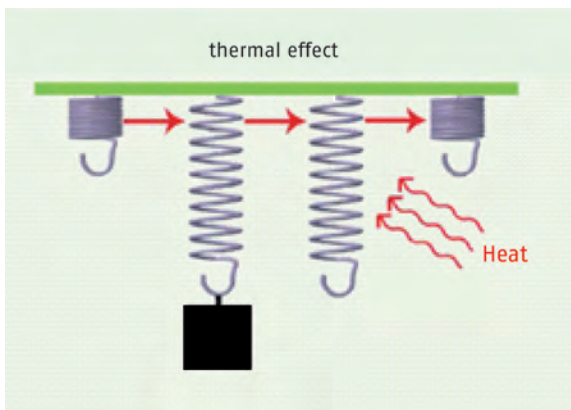
- easy handling
- minimum force needed for insertion
- optimal pressure distribution on the incus
- shape maintenance



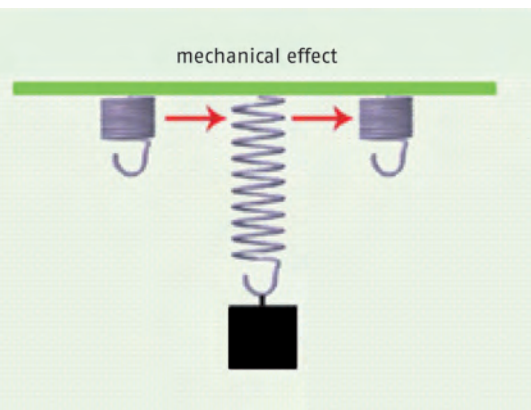
Material

Nitinol is an alloy of nickel (Ni) and titanium (Ti). There are two types of nitinol: The shape of thermo-reactive nitinol can only be changed permanently by changing temperature. In contrast the superelastic nitinol will spring back to its original shape after being bent. This is the material the hook of our new generation nitinol pistons is manufactured from.

1. Thermo-reactive Nitinol



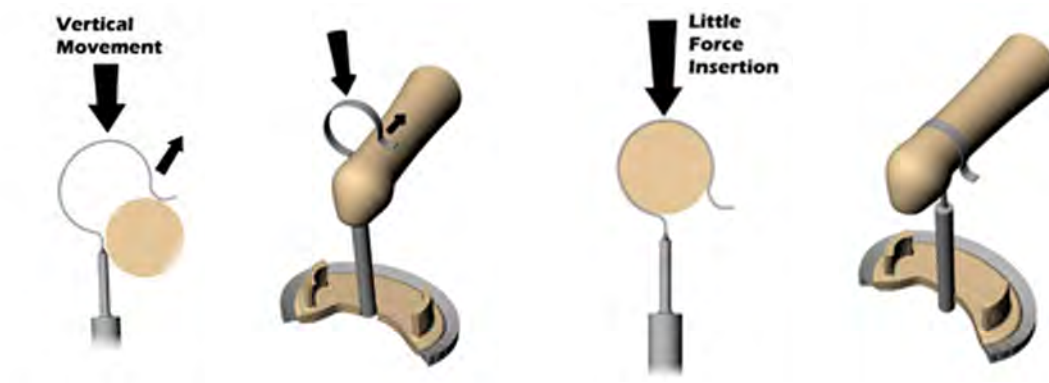
2. Superelastic Nitinol



Handling

The easy fit design of the piston makes the handling simple:

- Insertion requires only minimum pressure, which avoids damage to the incus.
- The equal pressure distribution ensures an optimal fit.





Prof. Dr. med. Serena Preyer
Head of ENT in Deaconess Hospital Karlsruhe, Germany

Preyer incus fork

Art.-No. 10-670-00



Incus fork for size determination

The average diameter of the incus is 0.7mm, but the exact diameter can vary from patient to patient. For this reason an incus fork with 0.7mm diameter was specially developed in collaboration with Prof. Serena Preyer, to ascertain the proper size of piston. The size of the piston is determined by simply placing the incus fork over the incus.



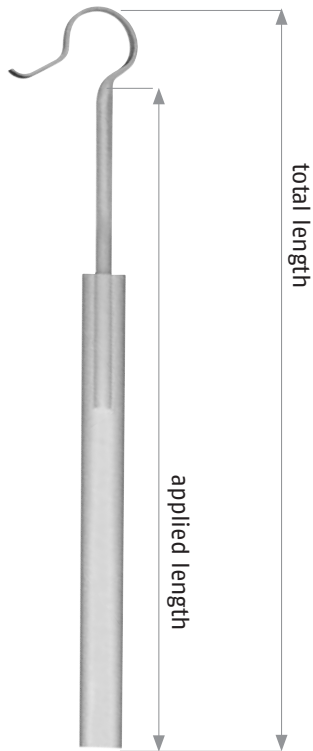
Size range of hook

M (standard): inner diameter = 0.7mm
S (small): inner diameter < 0.7mm
L (large): inner diameter > 0.7mm

Please note that you will find further information and an instruction tutorial/video on our website
www.spiggle-theis.com



Stapes Prostheses Nitinol/PTFE, 1 piece, sterile



Wire \varnothing : 0.2 mm
 PTFE shaft \varnothing : 0.4 mm

Incus \varnothing standard: 0.7 mm

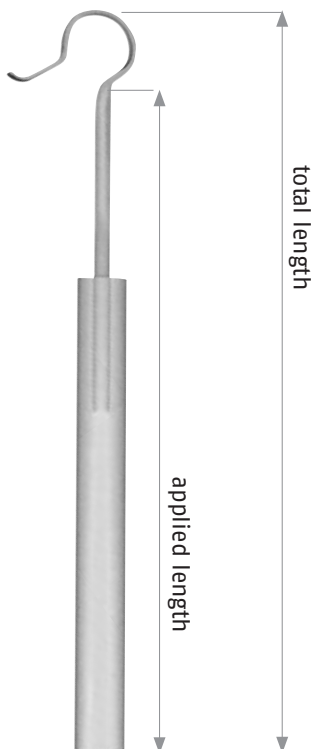
Art.-No.	Applied length (mm)	Total length (mm)
10740425M	4.25	5.25
10740450M	4.50	5.50
10740475M	4.75	5.75
shortenable:		
10740600M	6.00	7.00

Incus \varnothing small: < 0.7 mm

Art.-No.	Applied length (mm)	Total length (mm)
10740425S	4.25	5.25
10740450S	4.50	5.50
10740475S	4.75	5.75
shortenable:		
10740600S	6.00	7.00

Incus \varnothing large: > 0.7 mm

Art.-No.	Applied length (mm)	Total length (mm)
10740425L	4.25	5.25
10740450L	4.50	5.50
10740475L	4.75	5.75
shortenable:		
10740600L	6.00	7.00



Wire \varnothing : 0.2 mm
 PTFE shaft \varnothing : 0.6 mm

Incus \varnothing standard: 0.7 mm

Art.-No.	Applied length (mm)	Total length (mm)
10760425M	4.25	5.25
10760450M	4.50	5.50
10760475M	4.75	5.75
shortenable:		
10760600M	6.00	7.00

Incus \varnothing small: < 0.7 mm

Art.-No.	Applied length (mm)	Total length (mm)
10760425S	4.25	5.25
10760450S	4.50	5.50
10760475S	4.75	5.75
shortenable:		
10760600S	6.00	7.00

Incus \varnothing large: > 0.7 mm

Art.-No.	Applied length (mm)	Total length (mm)
10760425L	4.25	5.25
10760450L	4.50	5.50
10760475L	4.75	5.75
shortenable:		
10760600L	6.00	7.00





Stapes Prostheses Platinum/PTFE, 1 piece, sterile

Special quality characteristics of this stapes piston:

The hook of this prosthesis has four transversal notches. Under soft pressure of a forceps the hook closes equally and grabs perfectly without any reduction of blood flow.



Piston-Diameter 0.4 mm

Art.-Nr.	Applied length (mm)	Total length (mm)
10540425	4.25	5.25
10540450	4.50	5.50
10540475	4.75	5.75
shortenable:		
10540600	6.00	7.00
10540900	9.00	10.00

Piston-Diameter 0.6 mm

Art.-Nr.	Applied length (mm)	Total length (mm)
10560425	4.25	5.25
10560450	4.50	5.50
10560475	4.75	5.75
shortenable:		
10560600	6.00	7.00
10560900	9.00	10.00

Stapes Prostheses Titanium, 1 piece, sterile

Special quality characteristics of this stapes piston:

Under soft pressure of a forceps the hook closes equally and grabs perfectly without any reduction of blood flow.



Piston-Diameter 0.4 mm

Art.-Nr.	Applied length (mm)	Total length (mm)
10640425	4.25	5.25
10640450	4.50	5.50
10640475	4.75	5.75
shortenable:		
10640700	7.00	8.00

Piston-Diameter 0.6 mm

Art.-Nr.	Applied length (mm)	Total length (mm)
10660425	4.25	5.25
10660450	4.50	5.50
10660475	4.75	5.75
shortenable:		
10660700	7.00	8.00





Notes



SPIGGLE & THEIS
Medizintechnik

Burghof 14
51491 Overath (Germany)
Tel: +49 (0) 2206 / 90 81 - 0
Fax: +49 (0) 2206 / 90 81 -13
info@spiggle-theis.de
www.spiggle-theis.com

© 2014 by Spiggle & Theis Medizintechnik GmbH

Modifications and errors – including pictures – reserved.
Please note that due to production, the dimensions of
the products may vary slightly to those stated. Please note
also that not all goods might be for sale in your country.



PO Box 565, Balmain, NSW, 2041, Australia
P +61 2 9810 6947 F +61 2 8072 1556
admin@coremed.com.au www.coremed.com.au